

Inspiring, educating, entertaining and enriching...

Together



Annual Report
July 1, 2019 - June 30, 2020



Our Mission

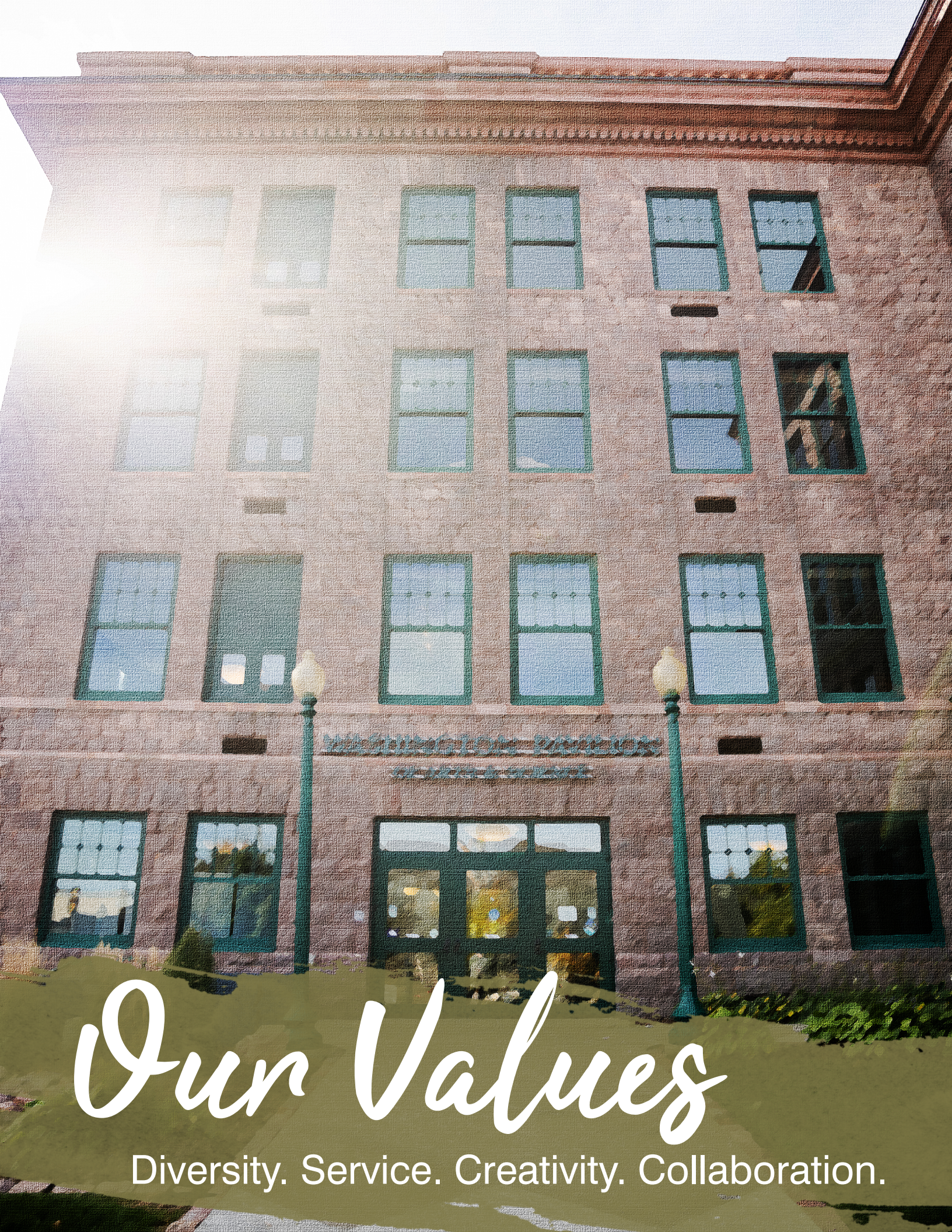
The mission of the Washington Pavilion is to inspire, educate, entertain and enrich our region by creating opportunities for all to explore and experience the arts and science.

Our Vision

Our vision is to be the region's premier arts and science destination, inspiring lifelong discovery and inclusive experiences.

Table of Contents

WHO WE ARE AND WHAT WE DO	4
Our Values	4-6
July 2019-June 2020 Board Members	7
Message from the President & CEO	8
PERFORMANCES	9
Husby Performing Arts Center	10
Dakota Academy of Performing Arts	11
EDUCATION	12
Community Learning Center	13
MUSEUMS	14
Kirby Science Discovery Center and Visual Arts Center	15
Visual Arts Center Exhibitions and Acquisitions	16
APPENDIX	17
Fundraising and Volunteers	18
Donors	19-27
Financial Highlights	28-29



Our Values

Diversity. Service. Creativity. Collaboration.



We Believe...

We believe everyone is a **learner** and a **creator**.

We believe in **fun**.

We believe in saying “**Yes!**” to our guests.

We believe in **community partnerships**.

We believe in **diverse experiences**.

Who We Are

The Washington Pavilion is the region's home for the arts, entertainment and science. Located in a beautifully renovated historic building in downtown Sioux Falls, it is one of only a few facilities in the world to bring together — under one roof — the performing arts, visual arts, interactive science and educational opportunities.

The Washington Pavilion makes art and science part of the daily lives of thousands of people with programming from Broadway tours to intimate chamber recitals in multiple performance spaces on campus and at the Orpheum Theater Center. We offer more than 100 hands-on interactive science exhibits in the Kirby Science Discovery Center, rotating educational and mission films in the unique Wells Fargo CineDome and regional and national exhibits ranging from South Dakota artists to notable national and international artists in the Visual Arts Center. Additionally, the Washington Pavilion offers quality educational programs and creates delectable delights at Leonardo's Café.



Our Impact

The Washington Pavilion serves the community through several important initiatives:



8,300 museum guests were welcomed into the Washington Pavilion, free-of-charge on the first Friday of every month.



Our educators provide opportunities for all ages with a broad range of engaging arts and science classes, workshops and internships and no-cost art experiences for at-risk youth and underserved populations weekly during the school year at multiple venues.



Graham Academy Preschool offers a unique educational setting for ages 3–5 with need-based scholarships available.

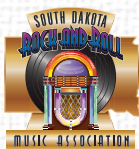


{ DAPA } DAKOTA ACADEMY OF PERFORMING ARTS prepares adolescents and young adults students for professional-level music and theater performances.



Our events team provides individuals, groups and businesses with affordable, one-of-a-kind space and services for weddings, conferences, meetings and social gatherings.

Cultural Partners that call the Washington Pavilion home.



The Washington Pavilion is a private, 501(c)3 not-for-profit organization, serving the community through earned and contributed support.

July 2019 - June 2020 Board Members

The leadership and support provided by the individuals who serve as board members for the Washington Pavilion is invaluable. These people are generous with their time and resources beyond expectations.

Board of Trustees (BOT)

Officers:

Jeff Hurley (Chair)
Jim Mathis (Vice-Chair)
Tom Wadsworth (Secretary/Treasurer)
Julie Ward (Immediate Past Chair)

Members:

Steve Erpenbach
Stephanie Gongopoulos
Jeff Gednalske
Liz Gullickson
Angie Haft
Jason Herrboldt
Brian Jans
Beth Jensen
Jennifer Kirby
Jeff Malone
Kim Patrick
Steve Sanford
James Sturdevant
Bill Townsend

Mayoral Appointees:

Rich Garry
Brad Heegel
Dave Knudson
Eric Weisser

Non-Voting Committee Liaisons:

Mary Garry (Performances and Events)
Joni Johnson (KSDC)
Chase Kramer (VAC)
Jenny White (Education)

Performances and Events Advisory Board

Mary Garry (Chair)
Kristi Geisler Holm (Vice Chair)
Kristin Cooke
Arnold Garson
Jami Gates
Amy Lauck
Carol McGinnis,
James Payer II
Nicole Plesec
Kristen Townsend
Eric Weisser

Kirby Science Discovery Center (KSDC) Advisory Board

Joni Johnson (Chair)
Micki Lundin (Vice Chair)
Michael Gramlick
Kristy Jackson
Jason Lemke
Rich Naser
Jim Nelson
June Thormodsgard

Visual Arts Center (VAC) Advisory Board

Chase Kramer (Chair)
Becky McElroy (Vice Chair)
Betty Beer Franklin
Jeff Holcomb
Cory Knedler
Lisa McElrath
Jack Paladino
Lindsey Twa
Michele Weber (Past Chair)

Education Committee

Officer:

Jenny White (Chair)

Advisory Board Liaisons:

Kristy Jackson (KSDC)
Lisa McElrath (VAC)
Kristen Townsend (Performances & Events)
Julie Ashworth (Past Chair)
Amy Baete
Vaney Hariri
Ed Harvey
Amy Kimber
Susan McAdaragh

Executive Finance Committee

Officer:

Tom Wadsworth (Chair)

Board Liaisons:

Kristi Geisler Holm (Performances and Events)
Jeff Hurley (Board of Trustees)
Jeff Holcomb (VAC)
Micki Lundin (KSDC)
Jim Mathis (Board of Trustees)

City Liaisons:

Tom Huber
Shawn Pritchett

Committee Members:

Jason Herrboldt
Lon Stroschein



*Performances and
Events*

The Washington Pavilion hosted performances and events in the Mary W. Sommervold Hall, the Belbas Theater and spaces inside the Orpheum Theatre Center, newly managed by the Pavilion as of July 2019. The organization's performance facilities are home to the Pavilion Performance Series, the Washington Pavilion's annual presentation of six excellent touring Broadway productions. The Washington Pavilion presents additional mission-related performances and collaborates with major producers, promoters and organizations so they may rent facilities at the Washington Pavilion and the Orpheum Theater Center to display all that the arts have to offer.

Because of the pandemic, an additional 19 engagements (many of which involved multiple performances) canceled or postponed between March 12 and June 25, 2020. Below is a list of performances and productions held as scheduled during the 2019-2020 fiscal year.

Pavilion Performance Series Shows 2019-2020



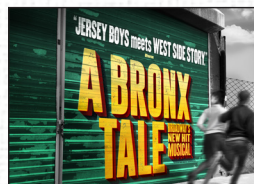
Oct. 18-19, 2019



Nov. 15-17, 2019



Jan. 14-16, 2020



Feb. 8-10, 2020



Mar. 9-11, 2020

Series Extras, Add-Ons and Bonus Bundle Performances Presented by the Washington Pavilion



July 2, 2019



Oct. 2, 2019



Oct. 30, 2019



Nov. 11-12, 2019



Jan. 25, 2020



Feb. 14, 2020



Feb. 21, 2020



Feb. 25-26, 2020



Mar. 6, 2020

Shows Presented by Regional Promoters

Jason Isbell featuring John Moreland
 North American Natural Bodybuilding Federation
 Bill Maher
 Jennifer Fulwiler
 Mystery – the Musical
 Darci Lynne and Friends

The Temptation and the Four Tops
 Chicago: Live in Concert
 The Mavericks
 The Highwaymen Live
 The Simon and Garfunkel Story
 John Crist

The Price is Right Live!
 Straight No Chaser
 Kris Kristofferson and The Strangers
 REO Speedwagon
 Newsboys

Holiday Favorites

Shaun Johnson's Big Band Experience
 Tonic Sol-Fa
 The Hegg Brothers
 Kenny G

Lorie Line
 Monroe Crossing
 Moscow Ballet's Great Russian Nutcracker

Community Affiliations

Sioux Empire Community Theater
 South Dakota Symphony Orchestra
 Live on Stage Sioux Falls Concerts Association
 Sioux Falls Jazz and Blues Society

Augustana University
 Harrisburg School District
 Dance Studios: LiRa, Balleraena, Dance Gallery, Britza, and the Mainstage Ballet and Dance Academy

{ DAPA } DAKOTA ACADEMY OF PERFORMING ARTS

With a mission to provide opportunities for young people to excel in the performing arts, the Dakota Academy of Performing Arts featured an expanded season with the following performances:



Feb. 14-15, 2020



Mar. 19-22, 2020



Oct. 23-24, 2020



Nov. 11-15, 2020



Dec. 16-20, 2020

Summer camp theatre opportunities included Virtual Broadway Boot Camp, Giants in the Sky, Wing It! and Summer Sing It as well as Footloose in partnership with Augustana University. The DAPA Plays for Living Theatre Company performed five shows as outreach throughout schools and community centers in the Sioux Falls region.

- More than 350 young performers participated in DAPA at the Pavilion programs
- Students from the DAPA program brought performances to over 6,000 audience members, including more than 1,800 area youth through our school outreach program





Education

The Washington Pavilion's Education Department strives to provide outstanding educational opportunities for people in Sioux Falls and the surrounding area through outreach, classes, professional development and special events. Education programming reaches a wide cross-section of the region: thousands of community members participated in educational programs in 2019-2020.



Action Arts and Science Program

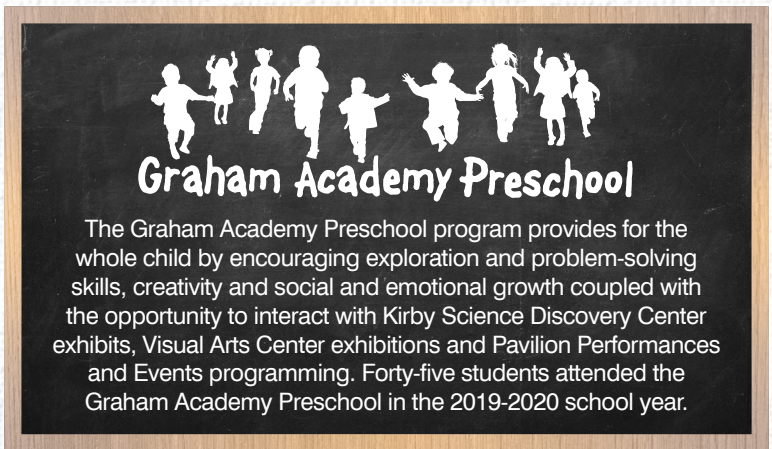
The Washington Pavilion Action Arts and Science Program (AASP) began in 1999 with a mission to bring high-quality art and science experiences to children with limited access to extracurricular activities. Today, we engage and inspire more than 350 students at 20 locations per week.

AASP partner sites for 2019-2020 included: Sioux Falls School District Kids Inc. (eight elementary schools), Juvenile

Detention Center, Volunteers of America-Dakotas (Dakotas Youth Center), KidStop Program, Kidz Count Program, The Boys & Girls Club Ignite (Horizons, E. 14th Street, Sneve Ave. location), and Lutheran Social Services (Hilltop and East Side locations). The Action Arts and Science Program is sponsored by the South Dakota Department of Education and is supported by its 21st Century Community Learning Center program.

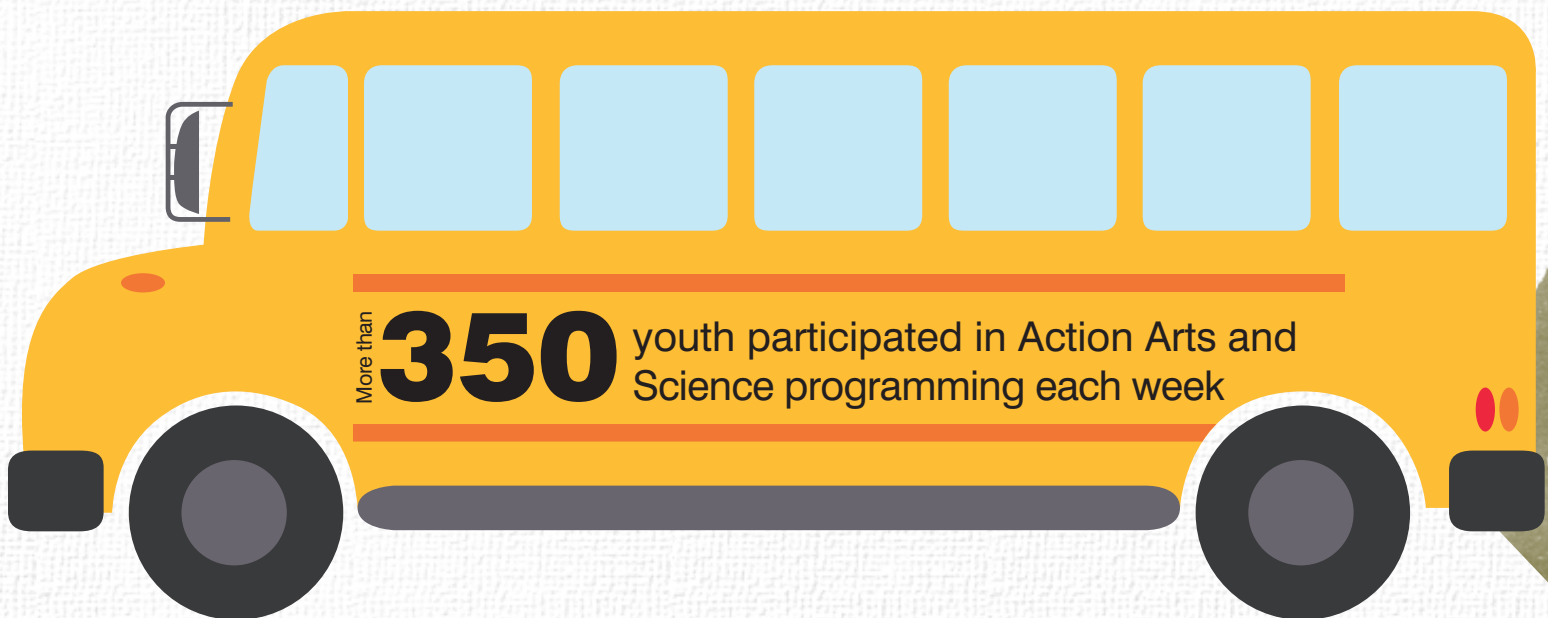
Arts and Science Classes, Workshops and More

Classes and camps were offered in the summer, fall and spring, serving 1,800 youth participants. Classes offered through the Osher Lifelong Learning Center (OLLI) reached 100 area seniors.



Visual Arts and Science Outreach and Education

- 150 students (K-8th grade) participated in the 2019 Design Challenge, an engineering-focused event where creativity and the scientific process allowed participants to design and build miniature golf holes.
- 450 students from Lowell Elementary participated in specially designed interactive labs through a partnership that brings them to the Washington Pavilion for a science curriculum-tied experience each year.
- The Washington Pavilion brought hands-on family activities to several community festivals, including Juneteenth, Sioux Falls Pride and the Water Festival.
- Ag Friday, an annual event celebrated as part of National Agriculture Week, was not held in March of 2020 as the Pavilion was temporarily closed during that time.
- 1,500 students of all ages took part in Discovery Labs or Art Smart Studio workshops with their school or community groups.
- The artwork of 550 students was displayed in "Off the Fridge" art exhibitions in the Washington Pavilion's second floor lobby.





Museums

The Kirby Science Discovery Center (KSDC) and the Visual Arts Center (VAC) experienced their highest heights and lowest lows in the last fiscal year. By early December 2019, the museums had their best annual attendance in the Pavilion's history. The Washington Pavilion welcomed 112,512 individuals into the KSDC and VAC, an increase of 21,195 guests over the previous year.

As COVID-19 crept into South Dakota, the Washington Pavilion made the decision to close its doors from March to June 2020. Museum attendance went from an all-time high to nothing overnight. The museums ended the July 2019-June 2020 fiscal year having welcomed 77,109 guests. Despite the challenges from the closure, the museums continued to invent new ways to connect with members, create new exhibits and build upon the customer experience.



KIRBY SCIENCE DISCOVERY CENTER

The highlights of the year for the KSDC included fabricating and opening an exhibit featuring *South Dakota Science* with Avera Health on the third floor of the KSDC. Sponsored by the City of Sioux Falls, the David B. Jones Foundation and Avera Health, this exhibit represents an investment of \$600,000 and covers nearly 6,000 square feet. The KSDC also hosted the traveling exhibit *Grossology: The (Impolite) Science of the Human Body*, which was an instant hit with nearly every child that experienced it.

Proud Accomplishments:

- Completed *South Dakota Science* exhibit – Phase 1
 - Focus on South Dakota professions
 - Fabricated *Dinosaur Discovery* exhibit area in-house
- Purchased and installed a second, and larger, outdoor Spinosaurus dinosaur in front of the Wells Fargo CineDome
- Made updates to the Wells Fargo CineDome concessions area
- Installed one of the artists Dick Termes' *Termespheres* in the entrance to the Wells Fargo CineDome
- Designed and installed new digital puzzle interactives on the third floor



VISUAL ARTS CENTER

The VAC hosted 23 individual exhibitions, featuring artists from all over the world as well as the highest-caliber artists from South Dakota. During this fiscal year, the VAC dedicated the Young Artist Gallery and the Bates Trimble Gallery in what are now formerly known as the Contemporary Gallery and South Dakota Gallery, respectively. The Young Artist Gallery was conceived as a mission-centric initiative to uplift all artists with a focus on providing an accredited museum space and professional gallery experience to up-and-coming talent in the community. The Bates Trimble gallery came about as a collaboration between the Pavilion and generous supporters to seek out the best of the best in South Dakota and feature art of all mediums. Several exhibitions in the last year that garnered positive reviews within the community included David Hamlow's floor-to-ceiling found-object sculptural pieces as well as Diego Rodriguez-Warner's massive and intellectual paintings.

The Washington Pavilion has seen a higher focus on its volunteer teams, the customer experience, community partnerships and overall investments in both the KSDC and VAC. Favorite annual events, such as Ag Day, Spooky Science and the Sidewalk Arts Festival, continued to be a major part of what the Pavilion offers its community. This year, each of these events looked a bit different due to the global pandemic. However, all of the events were able to take place and contributed to the attendance in the museums. The Washington Pavilion was grateful to welcome many new sponsors and supporters in both of its accredited museum spaces.

WELLS FARGO CINEDOME

Over 23,739 patrons enjoyed educational films in the Wells Fargo CineDome in 2019/2020. The CineDome closed in March of 2020 and will not reopen until the global environment changes. Mission films regularly presented in the CineDome included:

- "Back from the Brink"
- "Into America's Wild"
- "Mysteries of the Unseen World"
- "Superpower Dogs"
- "Volcanoes"
- "Walking with Dinosaurs"
- Hollywood Film: "The Polar Express"



Visual Arts Center Exhibitions And Acquisitions

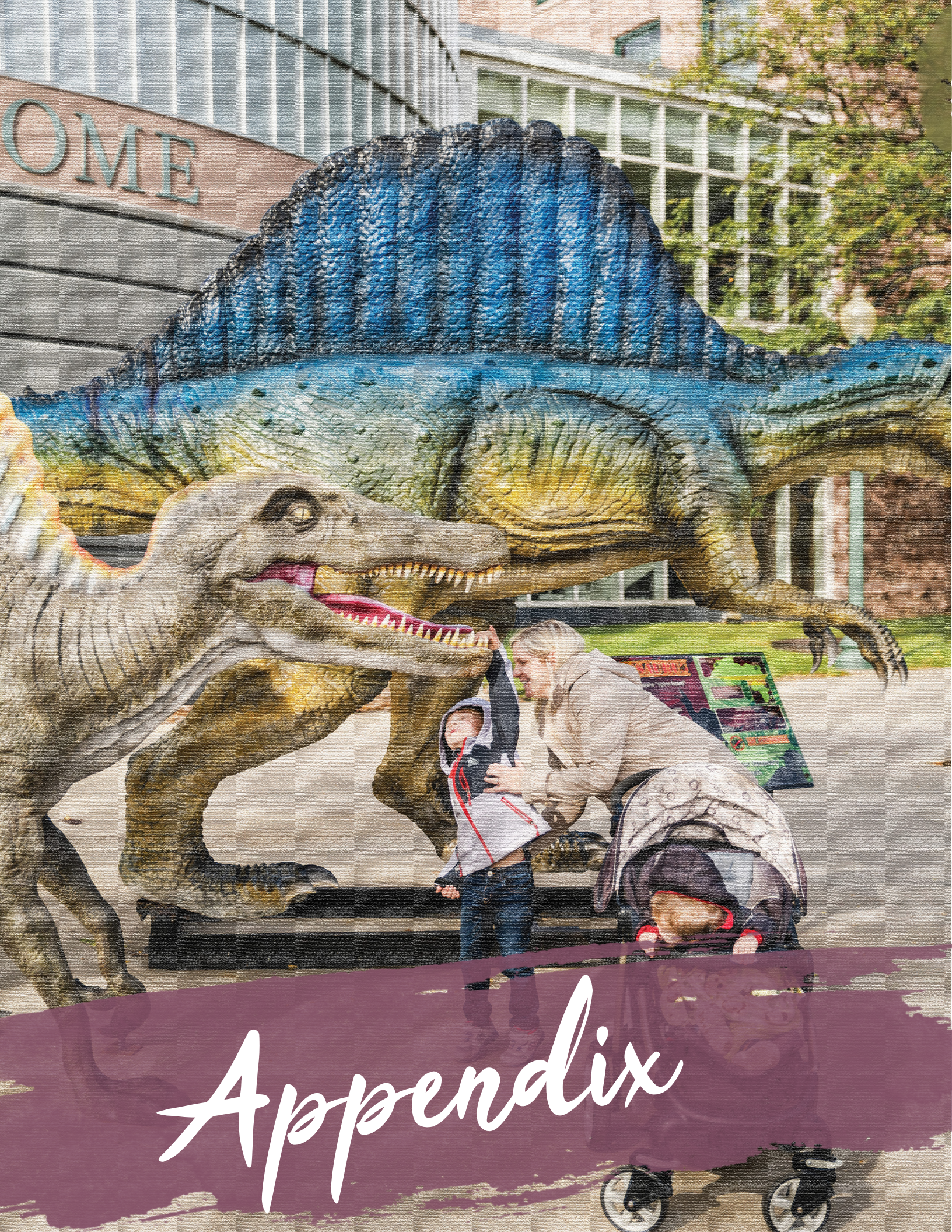
VISUAL ARTS CENTER EXHIBITIONS (JULY 2019-JUNE 2020)

Amanda Mccavour <i>Pink Field, Blue Fog</i> , Corner Gallery.....	Jan. 20-July 25, 2019
University of South Dakota Art Faculty Exhibition, Everist Gallery.....	Feb. 9-July 14, 2019
Watercolor on the Plains, South Dakota Gallery.....	Mar. 2-Sept. 19, 2019
Ladan Bahmani & Alice J. Lee <i>to decode</i> , Contemporary Gallery.....	Apr. 13-July 28, 2019
T.J. Dedeaux-Norris <i>to be seen and not heard</i> , Jerstad Gallery.....	May 18-Aug. 25, 2019
Collecting the Pavilion: 20 Years of Art Acquisitions, Everist Gallery.....	June 8-July 14, 2019
Paul Boerboom <i>Everything I See</i> , Shultz Gallery.....	June 22-Oct. 6, 2019
Dale Lamphere <i>Arc of Dreams</i> , Everist Gallery.....	July 27-Dec. 30, 2019
Face to Face: #selfie, Permanent Collection Gallery.....	Aug. 2-Oct. 15, 2019
Jana Anderson <i>Penumbra</i> , Contemporary Gallery.....	Aug. 3-Dec. 8, 2019
The Art of Puppetry, Entrance Gallery.....	Aug. 23-Nov. 22, 2019
Nate Stromberg <i>Painting with Paper</i> , Jerstad Gallery.....	Aug. 31, 2019-Jan. 5, 2020
Travis Hinton <i>Necessary Roughness</i> , Shultz Gallery.....	Oct. 11, 2019-Feb. 2020
Land of Plenty, Bates Trimble Gallery.....	Sept. 20, 2019-Feb. 16, 2020
South Dakota Governor's 8th Biennial Art Exhibition, Everist Gallery.....	Oct. 26, 2019-Jan. 19, 2020
David Hamlow <i>immiscible</i> , Contemporary Gallery.....	Dec. 12, 2019-June 8, 2020
Jerry Fogg <i>Native Soul: Every Picture Tells a Story</i> , Egger Gallery.....	Mar. 13-May 13, 2020
University Of South Dakota MFA Students <i>Canis Latrans</i> , Young Artist Gallery.....	Feb. 28-Apr. 12, 2020
Diego Rodriguez-Warner <i>farther from the truth</i> , Jerstad Gallery.....	Feb. 7-July 12, 2020
Northern Plains Tribal Art: Works from the Collection, Egger Gallery.....	Feb. 16-Mar. 15, 2020
Ancient Alchemy, Bates Trimble Gallery.....	Feb. 24-June 21, 2020
Judith to Another End, Shultz, Everist and Contemporary Galleries.....	June 1-Oct. 5, 2020
Arts Night 2020: Odyssey Exhibition, Jerstad Gallery.....	July 21-Sept. 18, 2020

NEW ACQUISITIONS (JULY 2019-JUNE 2020)

The Visual Arts Center (VAC) Collections continued to grow its permanent collection with the acquisition of the following artworks :

- Jeff Baldus, *Green Vase* | Gift of the Artist
- Craig Carver, *Untitled (Wrestlers) 1* | VAC acquisition from the estate of Charlotte Carver
- Craig Carver, *Untitled (Wrestlers) 2* | VAC acquisition from the estate of Charlotte Carver
- Nancy Olive, *Spring Comes Early* | VAC Purchase from the South Dakota Governor's Biennial
- Peter Reichart, *C.P.C. 2* | VAC Purchase from the South Dakota Governor's Biennial
- Eli Show, *Another End* | VAC Purchase from the South Dakota Governor's Biennial
- Andy Warhol/Capote Interview Magazine | VAC acquisition from the estate of Charlotte Carver
- Andy Warhol, *Self Portrait* | VAC acquisition from the estate of Charlotte Carver
- Jim Yellowhawk, *American Spirit* | VAC Purchase from the Northern Plains Tribal Art Market



Appendix

Fundraising and Volunteers

Corporate sponsors, individual donors, granting organizations and volunteers collectively added tremendous value to the Washington Pavilion and made the growth and development of its offerings possible. To all of those who gave of their time, talents and resources and made the July 2019-June 2020 fiscal year a success in spite of extraordinary circumstances — we thank you!

VOLUNTEERS (JULY 2019-JUNE 2020)

- **Active volunteers:** 262
- **Hours of recorded volunteer service:** Approximately 12,472 hours
- **New active volunteers:** 40

MEMBERSHIP DATA

- 4,990 memberships

GRANT REPORT

The Washington Pavilion receives grant funding throughout the year to support its staff and programming. The Pavilion is grateful for the generosity of a variety of granting organizations and foundations that allowed the Washington Pavilion to remain sustainable during the most recent fiscal year. In particular, the Pavilion would like to highlight the following gifts received between July 1, 2019 and June 30, 2020:

- **Educational Programming Support:** The South Dakota Department of Education, Bayer, RBC Foundation, Verizon, Wells Fargo
- **Scholarship and Open Door Pricing Support:** The Mary Chilton DAR Foundation, US Bank, The Woman's Alliance through the Sioux Falls Area Community Foundation
- **Museum Programming Support:** The David B. Jones Foundation, Wells Fargo, South Dakota Governor's Biennial, NISE Net
- **Performing Arts Programming Support:** South Dakota Arts Council, Arts Midwest, Sioux Falls Morning Optimist Club, The Sercl Family through the Sioux Falls Area Community Foundation, South Dakota Humanities Council
- **COVID-19 Relief/CARES Act Support:** Arts Midwest and the South Dakota Arts Council, Xcel Energy Foundation
- **Building-Wide Event Support:** Costco, Sam's Club

WASHINGTON PAVILION DONATIONS TO OTHER ORGANIZATIONS

- In-Kind: \$22,153
- Museum Vouchers: Approximately 1,168 passes valued at approximately \$16,352
- 132 performance tickets and three memberships valued at approximately \$8,050



Corporate and Foundation Donors

The Washington Pavilion is profoundly grateful for the generosity of donors who make it possible to inspire young and old with outstanding arts and science programming. With sincere gratitude we acknowledge the individual, family, corporate and foundation donors who have made contributions for all purposes during 2019.

Pillar Partners



President's Circle (\$25,000+)



Platinum (\$10,000-\$24,999)

Architecture Incorporated
Billion Toyota Scion
Central Bank
CitiBank
First Bank & Trust
Great Western Bank

KELO TV
L.G. Everist, Inc.
Pepsi-Cola Bottling Co
POET, LLC
Sammons Financial Group
SDN Communications

Sioux Falls Area
Community Foundation
Vance Thompson Vision
Wellmark Blue Cross Blue Shield
Wells Fargo Bank

Gold (\$5,000-\$9,999)

AARP South Dakota
 Bayer Fund
 Boyce Law Firm, L.L.P.
 CellOnly
 CorTrust Bank
 JDS Industries
 Midco
 Mount Marty University
 Scheels
 Sercl Family Fund*
 Showplace Cabinetry
 The Journey Group
 US Bank
 Verizon Foundation
 Woods, Fuller, Shultz & Smith P.C.
 Xcel Energy Foundation

Silver (\$2,500-\$4,999)

ADwërks
 Arts Midwest
 Butler Machinery Company
 Henry Carlson Company
 Howes Oil Co.
 Lloyd Companies
 Mary Chilton DAR Foundation
 Reliabank
 Sioux Falls Morning Optimists
 Sioux Falls Woman's Alliance*
 South Dakota Soybean Research & Promotion Council

Bronze (\$1,000-\$2,499)

Cadwell, Sanford, Deibert & Garry LLP
 Eide Bailly LLP
 GreatLIFE Golf & Fitness
 Pepper Entertainment
 Sioux Valley Energy Customer Trust
 South Dakota Farm Bureau
 South Dakota Humanities Council
 South Dakota Trust Company LLC
 Wingstop
 Xcel Energy
 Zoup!

Partner (\$500-\$999)

AARP Community Programs
 Bath Fitter
 C&R Supply, Inc
 Code Ninjas
 Conquer Escape Rooms
 Dynamic Spine Chiropractic Health Center
 Farrell's Extreme Bodyshaping
 Gardner's Wisconsin Cheese
 Hefty Seed Company
 Highest Health Chiropractic
 Inspired Chiropractic LLC
 Nothing Bundt Cakes
 Oh My Cupcakes!
 Plains Commerce Bank
 Rainbow Comics, Cards and Collectibles
 SafeSplash Swim School
 South Dakota Biotech Association
 South Dakota Pork Producers Council
 The Wellmark Foundation
 Upper Cervical of Sioux Falls
 Your Home Improvement Company

Contributor (\$250-\$499)

Ag United for South Dakota
 Bel Brands USA
 C&R Supply Inc
 CorTrust Bank
 Crist Orthodontics PC
 Dakota Layers
 Delta Dental
 East River Electric Power Cooperative
 Midwest Dairy Association
 SD Soil Health Coalition
 South Dakota Agri-Business Association
 South Dakota Grasslands Coalition
 South Dakota Wheat Commission

Contributor (\$250-\$499)

3M Foundation
 Ag United for South Dakota
 Agtegra Cooperative
 Bel Brands USA
 Dakota Layers
 Delta Dental
 Greater Sioux Falls Chamber of Commerce
 Piper Jaffray
 Priebe Insurance Agency, Inc.
 South Dakota Grasslands Coalition
 South Dakota Specialty Producers Association

Supporter (\$100-\$249)

AmazonSmile Foundation
 CNA Surety
 Esurance
 Hexad Farms
 SD No Till Association
 SD Soil Health Coalition
 Service First Federal Credit Union
 W.K. Kellogg Foundation

*Funds from these donors came from donor advised grants from the Sioux Falls Area Community Foundation.

Individual Donors

Platinum Partner (\$10,000+)

Mark and Pat Graham
Joe and Jennifer Kirby*
Dan and Arlene Kirby*
Karen Bates Trimble

Gold Partner (\$5,000-\$9,999)

Lisa and Miles Beacom*
Alan and Terri Bowden
Daniel and Sara Crosby*
Boyd and Dody Hopkins*
Steve and Becky Johnson*
Steve and Suzie Kirby*
De and Dave Knudson
Jeff and Katie Scherschligt
Paul and Koni Schiller
Al Schoeneman
Mary Pat and Gerald Sweetman*
Cheryl and Kenneth Walter*

Silver Partner (\$2,500-\$4,999)

Linda Baker
Bill and Lynne Byrne*
LaDawn and Dana Dykhouse

Steve and Kris Egger*
Larry and Suzanne Fuller
Lizbeth and Charles Gullickson
Fred and Sharon Lovrien
Linda and David Marquardt
Marilyn and Robert VanDemark*
Richard and Michelle Van Demark*

Grand Partner (\$1,000-\$2,499)

Brian and Denise Aamlid
Richard and Tammra Allen
Brett Baloun and Jennifer White
David Basel
Scott and Carolyn Christensen*
Richard and Kari Clark
Paul and Mary Ellen Connelly*
Dan and Janet Costello
David and Julie Ermer
Steve and Michelle Erpenbach
Cheryl and Tom Gaeckle
Rich and Mary Garry
Jenny Guido

Michelle and Tyler Haahr
Curtis and Glenda Hage
Bob and Kim Hayes
John and Ann Henkhaus*
Rebecca and John Hochstein
Benson and Jennifer Hsu
Jeff and Renee Hurley
Richard and Margie Jensen
Terry and Diane Johnson
Susan and Richard Johnson
Barbara and Tim Johnson
Debora Klein
Peg and Steve Lange
Robert and Kathryn Leech
James and Kara Mathis
Jeff and LaVonne McKinney
Bill and Jane Miller
Milt Mutch
Jan Nicolay
Gary and Joan Olson*
Tim and Christy Olson
Matilda and Mark Oppenheimer
Kim and Susan Patrick*
Sandra and Douglas Pay
John Peasley and Gail Shlanta

Judith and Michael Peterson
Don and Ann Platt
Lee Raines*
Ann and Brad Randall
Tracie and Steve Rohlf
Steve and Kathy Sanford
Tom and Kathrine Schnabel
Jill and Bill Schuneman
Scott and Ronna Sletten
Linda Smith
Darrin and Nikki Smith
Alan and Judy Spencer
Bob and Lori Sutton
Larry and Suzanne Toll
Kyle and Amy Torkelson
Loren and Jean Tschetter
Lindsay Twa and Mark Larson
Elizabeth and Frank Viola
Lisa Viola
Tom and Kim Wadsworth
Julie and Scott Ward
Michele and Roger Weber
James and Karri Wiederrich
Tom and Lynne Zimmer

Partner (\$500-\$999)

Scott and Patricia
Abdallah
Jeffrey and Jean Albrecht
Kara and David Arend
Bill and Peg Baker
Kate Bartell Nowak and
Ryan Nowak
Mark Berdahl
Arnold Bjork
Curtis and Marilyn
Bloemendaal
Gregory and Denise
Branough
William and Cathleen
Britton
Craig and Teresa Carlson
Charlotte Carver
Thomas Chiu and So
Young Kim
Joan Clark
Brett and Laura Cooper
Kerri and Ryan DeGraff
Mary DeJong and Tate
Profflet
Oscar and Lori DeVries
Pat and Paulette Doyle
David and Julie Elson
Jolene and Dennis
Erickson
Mike and Lynlee Fee
Wendy Fisher
Diane and Charles Flohr
Carol and Art Foster
Pam and Skipper Fritz
Arnold and Lynne Garson
Jeff and Julie Gednalske
Tom and Donna Haber
Jack and Judy Hamilton
Wendy Hasche
Jane and Joel Hathaway
Brad and Melinda Heegel

Christine and Jamie
Hendrickson
Theresa Henehan
Robert and Betty Hoffman
Kristi and Kevin Holm
Chris Johnson
Lee and Tracy Johnson
Dorothy A Johnson
Mark Johnson and Rand
Peterson
Lynne Jones
Sara Keane-Baumgarten
and Keith Baumgarten
Zachary and Denyelle
Kenyon
Jason and Tiffany
Knutson
Rhonda and Ken Koch
Chase and Rachael
Kramer
Yannick Laroche and
Shane Wuebben
Daniel and Marie LaRock
Amy and David Larson
Josette and Ronald
Lindahl
Alfred and Donna Lupien
Steve and Judy Mahlstedt
Kevin and Mary Jane
Maiers
John and Gail McFarland
Carol and John McGrath
John McIntyre
Mary McQuillen
Curtis and Kimberley
Mortenson
John and Patty Nohr
Robert and Kristine
O'Connell
Matthew and Keri Orstad
Carolyn Paulson
Chad and Jen Porter
Glenda and Jeffrey Pray

Michael and Christine
Rich
Maureen and James Robl
Jeff and Vickey Saylor
Joe and Susan Segeleon
John and Kelly Seitz
Dana and Chad Spanos
Scott Stratman
James and Diane
Sturdevant
Thomas and Tricia
Syverson
June Thormodsgard
Kristine and Greg Ticknor
David and Mary Tidwell*
Steven White

Contributor (\$250-\$499)

Sue and Rich Aguilar
Aaron and Dua Anderson
Paul and Margaret
Aspaas
Jeff Ball and Michele
Brochu
Robert and Winnie
Behrend
Charles and Judy Berdahl
Jennifer and Michael
Bergan
David Bergin and Liz
Spivey
Roger and Dianne Bjork
Kerry and Tom Boetel
Linda Broecher-Pfeifer
Michael and Casey Bullis
Jeremy and Teresa
Cauwels
Michael and Monique
Christensen
Shelley and Sam Connelly
Marlene and Ronald
Daale

Sandra and James
DeSaix
Douglas and Shirley
Erickson
Gary and Rosemary Evjen
Alan and Marlys Fenner
Lawrence and Gayle
Fenton
Kristin Flora
Libby Fritz
Tom and Ann Garry
Merlin and Sherri Goebel
Stephanie and George
Gongopoulos
Tony and Nancy Grandy
Jon and Kathy Hagen
Mike and Lori Hahn
Dale and Linda Hart
Peter and Marilyn Hegg
Daniel and Catherine
Heinemann
Brenda and Alan
Hodgson
Mike and Bunny Howes
John and Anne Hughes
Elizabeth and Mark
Jensen
Mark and Karen Johnson
Andree and David
Johnson*
Jacquelyn and Dusty
Johnson
Patty and Kevin Kase
Chris and Tammy Klein
Greg and Kari Koenders
Helen Koliner
Ryan and Sarah Kroetch
David Larsen and Karen
Heiling
Constance and Darin
Larson
Amy and Jon Lauck
Theresa and Clay Leveritt

Lane and Lindsay
Lundeby
Jon and Patsy Madland
Craig and Shelly
Margulies
Ellie Marshman
Bonnie and Rick Martin
James and Susan
McAdaragh
Eugene and Susan
McGowan
Laurita and Scott
McKercher
Tricia and Jonathan
Merrigan
Jack and Lona Miller
Teddi and Jay Mueller
Lacey and Kyle Musick
Charlie Nauen and PJ
Pofahl
Judith and Daniel Norman
James and Carol Oakland
Robert and Angela Oliver
Joe and Nancy Olsen
Mary and Eric Olson
Rodney and Ruth Parry
Donald Paulson
Jim and Mary Lou
Paulson
Scott and Gayle Pearson
Jonathan and Debbie
Pederson
Eric and Amy Plath
Bryant and Abigail Polzin
Emily and Joe Quinn
Joan Reddy and Gregory
Boris
Joel and Lois Running
Alan Sazama
Pat and John Schlimgen
Brenda and Robert
Schroder
David R. Scott

Jane and Leon Smith
Kjerstin and Jamie Smith
Ann Smith
Tom and Margie
Smotherman
Betty Strom
Trish and Bob Swanhorst
David Sweet
Camela and Tyson
Theeler
Teresa and Bill Townsend
Blair and Linda Tremere
Sarah and Matt Tschetter
Craig and Joyce Uthe
Brianna and Jeff
Venekamp
Steve and Amanda
Watson
Robert Williams
Rachel and Josh Winters
Chuck and Norma Wise
Mary Yates
Supporter (\$100-\$249)
Karen and Dennis
Ackerman
Susan and Fred Aderhold
Greg and Allison Alvine
Katherine and Robert
Amundson
Catharine Anderson
Jayne Anderson and Gale
Begeman
Robert Anderson
Warren and Sarah
Anschutz
Erin and Mitch Arends
Sara and Ben Arndt
Vincent and Adrienne
Bader
Alison and Ryan Bailey
Martha Baker
Kathy Bangasser

Ruth Barlow
Thomas and Becky
Batcheller
June and David Bean
Ethelle Bean
Kim and Janine Beck
Nancy and Dennis Beck
Brian and Dawn Beck
Douglas and Gaye Bell
Paul Beninga
Jack and Ruth Bennett
Jeffrey Berens
Sara Berte
Janet and Brian Bird
Robert Black
Norman and Melanie
Bliss
Leonardo and Maria
Bohorquez
Mary Lisa Borgstadt
Jerry and Jan Bork
GP and Milli Bowen
Deb Bowen
Scott and Beth Boyens
Tacey Braithwaite
Robert and Donna Bray
Linda and James
Breckenridge
Barbara Brinker
Todd and Linda Broin
Don and Carrie Brown
Nedd Brown
Carroll and Christopher
Browne
Paul and Julie Bruflat
Christine and Steve
Bruning
Terri and Mark Buechler
Jennifer and Jonathan
Bunkers
Michael and Connie
Burkard
Jen Erlandsen

Sonia Bury
Judy and Ron Buseman*
Bonnie Callies
Janice and John Camp
Mary and Larry Canfield
Alan and Aleta Carlson
Chip Carlson
Julie and Chuck Caron
Cathy Chapin
Ronald and Kathleen
Christensen
Joel and Linda
Christensen
Jessica Clarey and
Jayme Adrian
Steve and Cathy Clark
Justin and Beth Clarke
Ron Claussen
Joyce Clay
Shawn and Julie Cleary
Cindy Clow
Marjorie Conahan
Brian and Carrie Corner
Jerry Cozad
Chelsea Cronin
Kenneth and Mary Ann
Cross
Roger Cunningham
Dr. Richard and Julie Day
Keith and Jill Deibert
Keith and Beth Demke
Stephanie and Nate
Deuter
Sue DeVos
Ronald and Lexia DeWit
Karen and James DeWitte
Mary Dick-Langrock and
Dale Langrock
Tim Dougherty and Karen
Schreier
William and Rosemary
Draeger
John Dyvig

Cari and Scott Eastman	Sarah Goth	Laura Hofer and Chris Hoff	Ed and Karen Johnson
Elizabeth and Craig Ebert	Helen Grace	Rose Ann and Josh Hofland	Gene and Cynthia Jones
Ron and Aldena Ecklein	Andrea Grann	Amy and Joseph Hogue	Thomas and Cynda Jones
Jarrold and Amber Edelen	Maggi Graves Lundgren	Karen Hohman	Jane Justice
Rachael Eggers-Ferry	Ron and Christy Green	Art and Michele Holden	Michael and Gail Kabris
Byron Ekdorn	Evelyn and Ann Griesse	Dennis Hopfinger and Carolyn Clague-Hopfinger	Arlene Kampshoff
Scott and Colleen Elcock	Carol Grode-Hanks	Linda Hoppe	Mark Karels
Orin and Linda Ellwein	Elaine and Alan Groom	Arlene and Peter Horner	Diane Kary
Marcia and Dennis Engel	Beverly and Darwin Gunderson	Barbara Horton	Thomas and Kay Kassube
Saranne Ensberg	Jamie and Randy Gunhus	Laura Horton and Gale Wiedow	Wade and Athena Kellenberger
Jill and James Entenman	Gladis Guzman	David Hosley	Jeanne Keller
Jim and Melissa Even	Suzanne Hagseth	Warren and Denise Hovland	Larry Kemerling
Cory and Erin Faber	Drs. Ruth and Stan Haidle	Sandy and Gary Howard	Earl and Kathy Kemp
Pat and Donn Fahrendorf	Douglas and Anne Hajek	Randy Howey	Frank and Toni King
Joel and Alicia Farmer	Craig and Katie Halverson	David Hrusovsky and Julia Collins	Dan Kippley
Richard and Dee Farnham	Bradley Halverson	Marilyn and Leland Hult	Larry and Mary Jane Klaahsen
Gary and Ruth Felderman	Judi Hanify	Kari and Chad Hultgren	Richard and Gail Klein
David and Diane Feller	Candy Hanson and Mike Crane	Loila Hunking and Lyle Mensch	Holly Kleinsasser
Mary Jane Fenn	Brandon and Brittany Hanson	Dennis Hunter	Geoff and Elise Knobloch
David and Carol Fields	Dan and Rita Hardes	Jenna Isaacson	Lela Knudson
Deb Fischer Clemens	Mel Harrington	Janelle Jamtgaard	Tamara Lee and Kenneth Knudtson
Laurie and William Fluit	Darci Haug	Brian and Stacey Jans	Dick and Cindy Koch
Carol Flynn	Thadd and Linda Heberling	Dennis and Janelle Jarabek*	Delana Krause
Ann Forster	Kaia and Kurtis Hedrick	Gary and Sharon Jarding	Kevin and Mary Kroeze
Catherine Frederickson	Shelley Hefty and Darren Hefty	Mary Margaret Jarding	Elizabeth and Craig Krogstad
Kris Frerk	Tracey and Pat Heinemann	Tyler and Sara Jares	Pamela Kruger
Curt Friesen and Julie Anderson-Friesen	Leah Heister	Thomas and Susan Johnson	Bill and Joyce Kubat
Harvey and Leonore Friez	Janet and Bruce Henke	Justin and Chrissy Johnson	Randy and Beth Kuenzi
Diana and Mark Froning	Darcy and Troy Henley	Gail Johnson	Chuck and Sandie Kuntze
William and Gail Fuller	Scott Henry and Terri Peterson-Henry	Agatha and Craig Johnson	Nancy and Rob Kunz
Heidi and Matt Galer	Roger Hexem	Trent Johnson and Jeanne Hassebroek-Johnson	Shauna Lage
Jami Gates	Jean and Richard Hicks		Michael and Carmen Lagerstrand
Keith and Anna Gauer	Julie and David Hilderbrand		Terry and Sue Ann Lang
Lisa Gerner	Sara Hilmoe and Mike Schmidt		Duane Larson
Steve and Penny Gilles			Lance and Mary Larson
Bryan and Laura Goeden			
James and Carla Goedtke			
Vance and Sherry Goldammer			

Lisa and Charlie Larson	Diana Messick and James Maloney	Kathryn and Matthew Parker	Elaine and Jerry Roberts
Michael and Shirley Leimbach	Connie Michel	Jeffrey and Carol Parker	Andrea and Brian Rock
Jason and Tabatha Lemke	Joni and Bob Miller	John and Jane Paulson	Paul and Susan Rohde
Carol Lerdal*	Patrick and Karen Mills	David Paulson	Margie and Rex Rolfig
Mary and Ben Lerssen	LeAnn and Stephen Minister	James W. Payer II	Marlys and Troy Roskens
Heidi and Nathan Leuning	Leslie and Mark Morgan	George Perry	Karen Roth
Amy and Brian Lindaman	Peter and Rhonda Morse	Jason and Kara Petersen	Erin Royer
William and Lorrae Lindquist	Ardeen and Cindy Mulder	Mary and George Poppenga	Jon and Stephanie Ruby
Steven and Patricia Lindquist	David and Suzie Munce	Dave and Charis Poppens	Karen and Bryan Ruby
Editha Liu and Roberto Anel	Thomas and Karla Murphy	Cheryl Poppens	Kermit and Doris Rye
Janice and Larry Long	Jeffrey and Mary Jo Murray	Mary Ann Poppinga	Dan and Sharon Rykhus
Peter and Katherine Looby	Michael and Rebecca Muston	John and Penny Porter	Barbara Sampson
Janet Lovre	Sela and David Nagelhout	Robert and Sara Post	Jonna Sandstrom
George and Kay Lundberg*	Roger and Debra Nearman	Karen Pratt	Ann and Chris Schiltz
Sharon and Richard Lunder	Greg and Jennifer Neitzert	Thomas Price	Jeannette and Lloyd Schipper
Larissa and Josh Luther	Larry and Diane Ness	Marilyn Prine	Sally and James Schnatterly
Risty and Mike Maddox	Meaghan and Kyle Neuberger	Aileen and Dragos Profir	Lynn Schneider
Bruce and Dianne Mair	Jean and Dean Nichols	Franklin Pudas	Terry and Robert Schnepf
Jeff Malone	Tom and Jean Nicholson	Carol and Greg Puerkel	Sara and Charlie Schoenfelder
Peter and Linda Marcus	Connie and Greg Niederauer	Richard and JoEllen Puttmann	Linda Schulte
Jeffrey and Rosemary Margulies	David and Chris Nielsen	Dan Raap and Julie Forster	Eric Schulte
Randy and Brandy Marks	Mark and Tammy Noordermeer	Sandi and Harvey Ramirez	Vicki Schultz
Lynette Matzen	Stephen and Julie Nord	Andrea and Alejandro Ramirez	Greg and Karen Schultz
Duane and Laura May	Kristina and Craig Nordby	Geraldine Ray	Miles and Vickie Schumacher
Karen and Jerry May	John and Valoy Nordlie	Kristin and Thomas Reaves	Trudee Schur
Mike and Jean McAlpine	Kevin and Linda Nyberg	Marian Redlin-Reit and Royce Reit	Steven and Lenae Schwartz
Margaret McDaniels	Greg Odea	Rocky and Arianna Rehfeldt	David and Kristin Seruyange
Lisa and Luke McElrath	Jennifer and Troy Oehme	Jill and James Reindl	Rebecca and Rod Sevening
Kimberly and Mike McElroy	Charles O'Hara and Emily Winterton	Kelly and Jeff Rhone	Warren Shoberg
Carol and Rod McGinnis	Mary Olinger	Tracy and Kevin Richardson	JG and Kellie Shultz
Susan McIntosh	Joan Pankonin	Karla Rikansrud	Gene Siebert
Amy McNabb		Steve and Jenny Rindsig	Sue and Mark Simet
			Lori and Jeffery Skinner
			Peter and Tami Skorczewski
			Wes and Jo Skunberg

Laurie and Les Smith
Carol and John Snobek
Shirley and Larry Snuttjer
Duane and Jan Sommer
Randy Sorenson
Marion Sorlien
Donalene Spars
Rob and Nancy Stanek
Myrna and Gary Stanley
Mindy Statler
Rhonda and Dane Steffen
Robin and Kevin
Stephens
Cliff Steuck
Tony and Sara Stevens
Holly and Robert Stiff
Sheryl Stokesbary
Jeffrey and Reneece
Strand
Brian and Tarina Stroh
Rachelle and John Sutton
Lori Sutton
Karen Swanda
Mark and Lisa Swenson
Carolyn Tam
Jane Taylor
Sarah Thimsen
Jeff and Jackie Thomas
Jean Thompson
Scott Thon
Becky Thorp
Wendy Thorson
Alma and David Tonsager
Kristen and Russell
Townsend
Stephanie and Charles
Trautwein
Henry and Sally Travers
Shannon and Steve Van
Buskirk
Dean and Shirley Van
Peurse

Brenda and Doug Van
Zee
Carol VanderKolk
Jenny and Tim Vavra
Vickie and Terry Vellek
Tamara Vik
Wrede and Barbara Vogel
James Voigt
John and Ramona Wade
Cindy Walsh
Tom and Kathy Walsh
Lorna Watkins
Dustin and Tracy Weiss
Randy and Suzanne
Welter
Bob Wendland and Luke
Tatge
Jeff and Linda Weppler
Colleen Werner
Ken and Karla Wickre
Benjamin Wiener
Daryl and Mary Wierda
Kevin and Megan
Wiessner
Kent and Barb Wigg
Angela Williams
Deborah and Matthew
Witte
Cecelia Wittmayer
Andrea Jo Wohlenberg
Ray and Liz Woodsend
Teresa and Chris Wrich
Autumn Wright
Carl and Lori Wynja
Charles and Barbara Ann
Yelverton
David and Candace
Zeigler
Josh and Emily Zellmer
Rep. Larry and Judi
Zikmund
Timothy and Pamela
Zoellner

Kendra and Michael
Zuercher
Friend - \$1-\$99
Lowell Aman
Ruth and Leroy Anderson
Lavonne and Virgil
Anderson
Susan Anderson
Ruth Atkins
Twila Baedke
Richard and Deana Barth
Holly and Jeremy Beaty
Lyle Benson
Jamie Bitz
Kari and Justin Bolen
Chris and Kimberly
Bowman
Darrel Bowman
Susan and Scott Bull
Richard and Marjane
Burgard
Jessica and Scott Candy
Sarah Carnes
Paul and Rhoda
Carpenter
Concepcion and Michael
Catanguai
William and Amy Cauble
Patty and Keel
Coddington
Jennifer, Aaron and Katie
Condron
Gary and Kathy Conradi
Brenda Cook
Terry and Sue Coomes
Will and Julie Cornay
Miriam Dailey
Judith Davis
Phyllis Day
Donna Dean
Collin Deboer
Bill and Dawn Degen

Jeannie and Derek Dehne
Joan Doss
Linda and David Drew
Claudia Ellison
Bethany Erickson
Amber Finnesand
Laura Fiorello
Shane Fischer
Jennifer Fisher
Lori and Brad Fossen
Michelle Friesen and
Michael Miller
Daniel Gacke
George Garrett
Virgene and William Gast
Rachel Gertner
Nick and Sheila Gladue
Ethan Graff
Todd Gravning
Bobette and Paul
Greenfield
Madelyn and Kyle Grogan
Geneva and Wayne
Grooters
Angela and Geoffrey Haft
Mark and Kathleen
Hammond
Wanda and Michael
Hartle
Randy Hascall
Gary and Randi Helder
David and Rebecca
Hennies
Shawna and Brent
Henriksen
Gene and Sharon Hetland
Nate Hewes
Mary Ann Hohman
Laura Holbrook
Mary Howard
Betty Huebner
Michael and Cindy
Huether

Katharine and Nathan Hults	George and Kristen Lund	Debra Piper	Faith and Steve Treague
Jason and Susan Hurd	Julie Lushbough	Gene Polson	Deanne Trussell
Beth and Greg Jamison	Cheryl and Mike Lynde	Beth and Joe Prasek	Daniel and Lisa Tunge
Judy Jasper	Christiane Maroun and Raed Sulaiman	Tyann Prins	Karen and Paul Van Bockern
Cindy Jass	Ronda and Bryce Mayrose	Susan and Rob Pyatt	Joan and Myron Van Buskirk
Fritz Johnk	Dave and Becky McElroy	Leah Quinn	Julie Van Tol
Joni Johnson	Ashley McKeown	Nathan Rabe	Coletta Venske
Pamela Johnson	Carla McMurry-Kozak	Kayla and Ryan Rand	Marilynn and Dick Viehweg
Rico Johnson	Craig McTighe	Mary Ranney	Bruce and Kristi Wallin
Sandra and Ronald Johnson	Craig McTighe	Simon and Heather Reed	Paul A and Margaret S Weber
Merle and Sharon Johnson	Carmen Means	Simon and Heather Reed	Laurel Wek
Debbi Jones	Tonia and Jon Meyer	Kathy and Jim Retzlaff	Ray Wellman
Alyssa Jonker	Mary and Gary Michaels	Terry and Laura Rist	Laura Wellman
Nick Joslyn	Sharon Michailidis	Chris Romereim	James and Marjell Wendland
Carolyn Kading	Julie and David Mickelberg	AmberRose Ross	Grant and Rocki Wentzel
Danielle Kearin	Lindsay and Dan Miller	Karen and Wayne Ruff	Stuart Wenzel and Sheryl Faber
Nicole and Rob Keisacker	Mary Milroy and Daniel Johnson	John Rychtarik	Douglas Wernke
Courtney Keith and Titus Kiplimo	Bonnie Morgans	Lona Sahl	Jason and Tammy Wierenga
Vicki Kerkvliet	Beverly Mueller	Gonzalo and Lois Sanchez	Grace Wilson
Kylee Kettering	Jessie and Tyler Muth	Merry Ann Sauls	Linnea Wilson Hayward
Holly Killion	Karen Myers	Shane Schellpfeffer	Ashley WolfTornabane
Tonda and Ken Kirton	Amity and Brian Neff	Todd Schneider	Thomas and Deloris Zender
Amy and Joe Kleinschmit	Cynthia and Jeff Nelson	Austin and Anna Sejnoha	
Linda Kleinschmit	Terry and Linda Nielsen	Wayne and Marlene Slothouber	
Amy and Sean Kooistra	Laurie and Thomas Norberg	Emily and Noah Smith	
Tom and Kimberly Kovash	Daniel Norgaard	Catherine Dutenhoffer	
Michael and Jackie Kramer	Margaret Novak	Jennie Smithback	
Dana Krumrey	Doris O'Dea	Shirley Sneve and Tom Rickers	
Dick and Pat Kruse	Janet Olson-Finken	Jamie Stage	
Judy Lampert	Betty Ordal	Susan and John Steele	
Jeff Larsen	Katie Otteson	Gene and Denise Stehly	
Joan and Jeff Larson	Frank and Dee Owens	Jack and Linda Stengel	
Sarah Larson	Mike and Connie Pederson	Bev Svarstad	
Paula Lechner	Dale Pedretti	Cole Swanson	
James Lere	Nancy Penney-Peterson	Mary Anne Talotta	
Melissa Lindsey	Mark and Holly Peterson	William and Cheryl Taylor	
Emma Lopez	Jason and Tiffany Pfitzer	Douglas and Susan Tellinghuisen	
		Lois and William Timmermann	

*Funds from these donors came from donor advised grants from the Sioux Falls Area Community Foundation.

WASHINGTON PAVILION MANAGEMENT, INC.
STATEMENTS OF FINANCIAL POSITION (ALL FUNDS)
For the Year Ended June 30, 2020 and the Period Ended June 30, 2019

	<u>2020</u>	<u>2019</u>
Assets		
Current Assets		
Cash and cash equivalents	\$ 3,081,317	\$ 2,469,085
Certificates of Deposit	\$ 1,181,808	\$ 1,156,766
Contributions receivable, net of allowance and discount	405,221	372,128
Accounts receivable, net of allowance	229,572	254,255
Inventory	53,232	57,029
Prepaid expenses	118,867	158,799
Deposits on exhibits and guest artists	<u>23,456</u>	<u>2,650</u>
Total current assets	<u>5,093,473</u>	<u>4,470,712</u>
Net Property and equipment	<u>487,232</u>	<u>465,639</u>
Other Assets		
Contributions receivable, net of allowance and discount	656,082	762,511
Beneficial interest in assets held by Community Foundation	335,683	315,836
Permanent collection	<u>1,091,808</u>	<u>1,086,285</u>
Total other assets	<u>2,083,573</u>	<u>2,164,632</u>
TOTAL ASSETS	<u>\$ 7,664,278</u>	<u>\$ 7,100,983</u>
Liabilities and Net Assets		
Current Liabilities		
Accounts payable	\$ 192,000	\$ 297,803
Accrued expenses	441,910	538,520
Deferred revenue	2,050,626	2,055,509
Paycheck Protection Program loan	<u>726,300</u>	<u>-</u>
Total current liabilities	<u>3,410,836</u>	<u>2,891,832</u>
Net Assets		
Without donor restrictions		
Undesignated	(195,683)	25,314
Designated by the Board - art and objects maintained by the Visual Arts Center and Kirby Science Discovery Center	1,091,808	1,086,285
Designated by the Board - special projects	44,686	44,686
Designated by the Board - operating reserve	<u>1,382,768</u>	<u>1,373,801</u>
	<u>2,323,579</u>	<u>2,530,086</u>
With donor restrictions	<u>1,929,863</u>	<u>1,679,065</u>
Total net assets	<u>4,253,442</u>	<u>4,209,151</u>
TOTAL LIABILITIES AND NET ASSETS	<u>\$ 7,664,278</u>	<u>\$ 7,100,983</u>

Due to a change in the organization's fiscal year, this statement reflects the year ended June 30, 2020 and the period from January 1, 2018 to June 30, 2019.

Audited Financial Statements are available upon request.

Financial Highlights

WASHINGTON PAVILION MANAGEMENT, INC.
STATEMENTS OF ACTIVITIES (ALL FUNDS)
For the Year Ended June 30, 2020 and the Period Ended June 30, 2019

	<u>2020</u>	<u>2019</u>
Net Assets Without Donor Restrictions		
Public support		
City of Sioux Falls	\$ 2,163,520	\$ 2,654,360
Contributions	708,792	1,022,896
Donated goods and services	36,656	63,113
Special events (net of direct cost of \$13,212 and \$76,697)	78,141	183,040
Government grants	169,443	222,484
Private grants	29,558	53,767
Net assets released from restrictions	395,238	515,752
Total public support	<u>3,581,348</u>	<u>4,715,412</u>
Revenue and other		
Performance ticket income	2,316,302	5,754,947
Admissions	227,862	498,392
Sale of services	475,328	810,304
Facility rental	311,279	469,594
Membership dues	285,476	360,881
Café & Retail Services (net of direct cost of \$226,456 and \$414,510)	557,033	1,100,804
Educational	282,616	499,928
Miscellaneous revenue	36,240	25,359
Total revenue and other	<u>4,492,136</u>	<u>9,520,209</u>
Total public support, revenue and other	<u>8,073,484</u>	<u>14,235,621</u>
Expenses		
Program services		
Visual Arts Center	555,590	806,057
Husby Performing Arts Center	3,204,538	5,991,786
Kirby Science Discovery Center	946,622	1,528,034
Community Engagement & Learning	576,315	938,503
Membership	76,313	119,519
Box Office and events	736,191	1,023,926
Café & Retail Services	601,182	890,955
General and administrative	1,245,257	1,681,090
Fundraising	337,983	405,250
Total expenses	<u>8,279,991</u>	<u>13,385,120</u>
Change in Net Assets Without Donor Restrictions	(206,507)	850,501
Net Assets with Donor Restrictions		
Public support		
Contributions	376,098	385,057
Private grants	270,500	335,073
Net assets released from restrictions	(395,238)	(515,752)
Revenue and other		
Unrealised loss on investments	(562)	(3,541)
Change in Net Assets with Donor Restrictions	<u>250,798</u>	<u>200,837</u>
Change in Total Net Assets	44,291	1,051,338
NET ASSETS, BEGINNING OF YEAR	<u>4,209,151</u>	<u>3,157,813</u>
NET ASSETS, END OF YEAR	<u>\$ 4,253,442</u>	<u>\$ 4,209,151</u>

Due to a change in the organization's fiscal year, this statement reflects the year ended June 30, 2020 and the period from January 1, 2018 to June 30, 2019.
Audited Financial Statements are available upon request.



WASHINGTON
PAVILION[®]